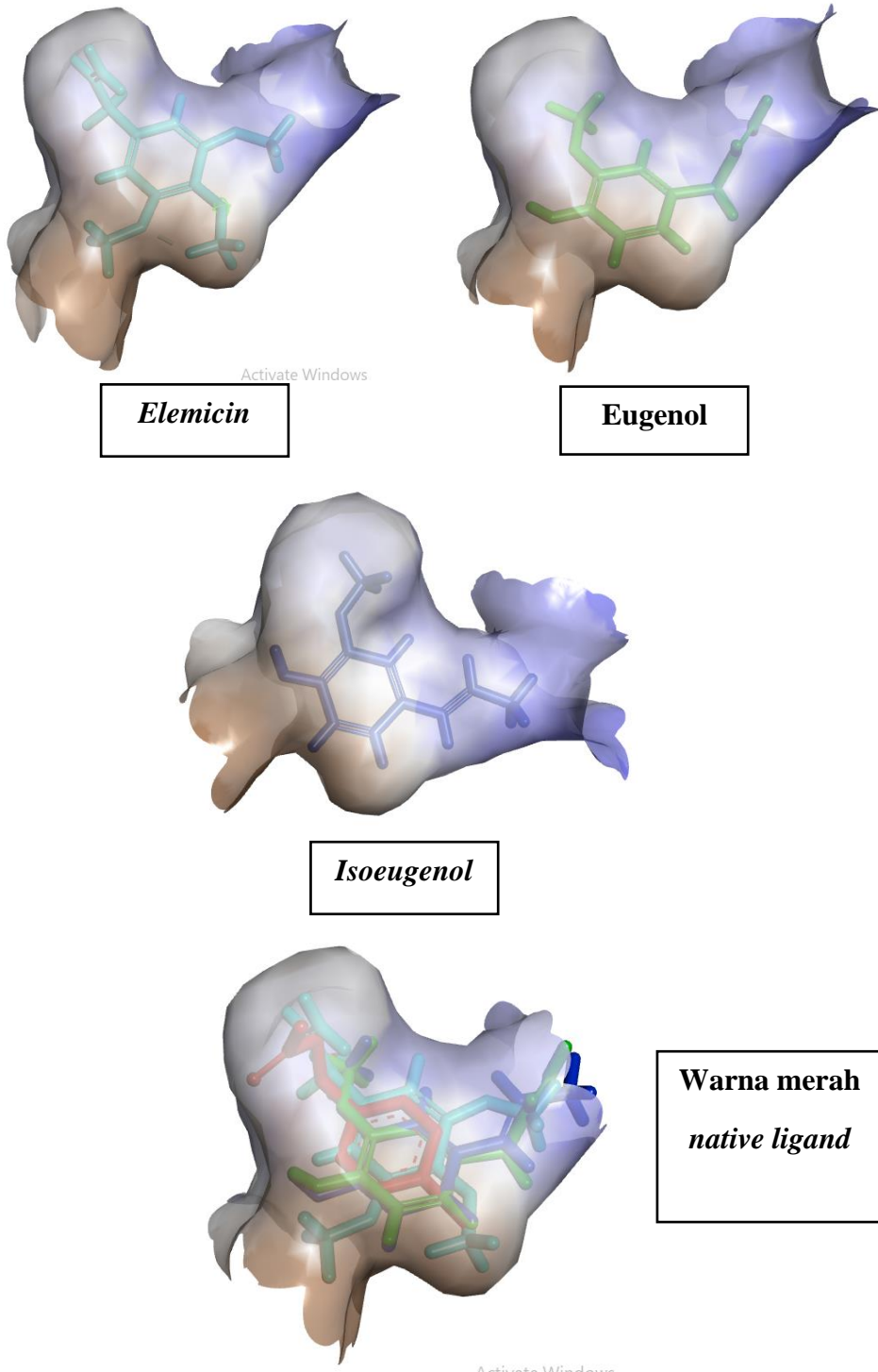
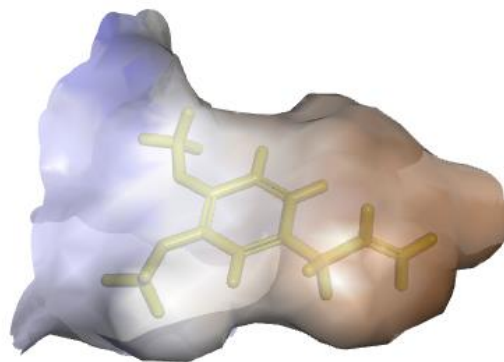
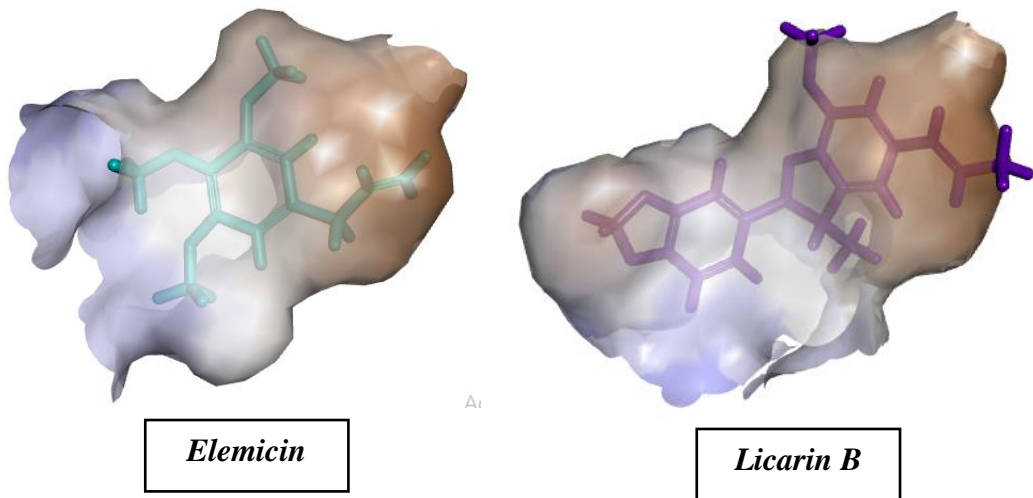


LAMPIRAN

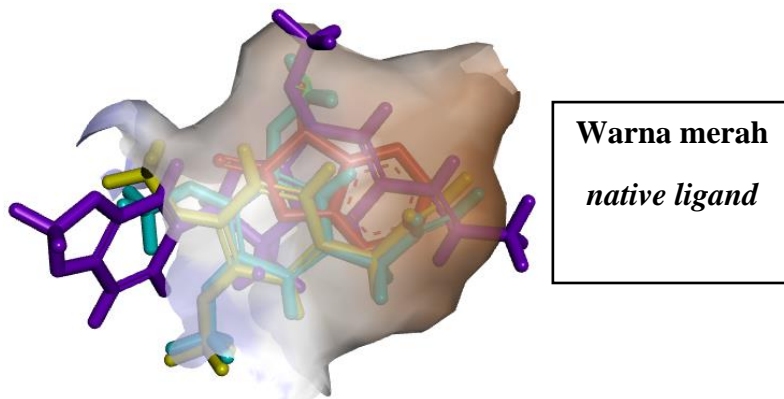
Lampiran 1. *Binding pocket* ligan uji terhadap reseptor GABA (4MS4)



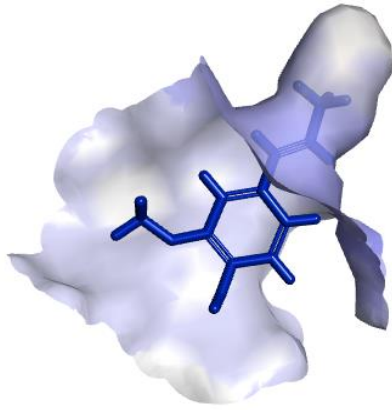
Lampiran 2. *Binding pocket* ligan uji terhadap reseptor MAO-B (1OJA)



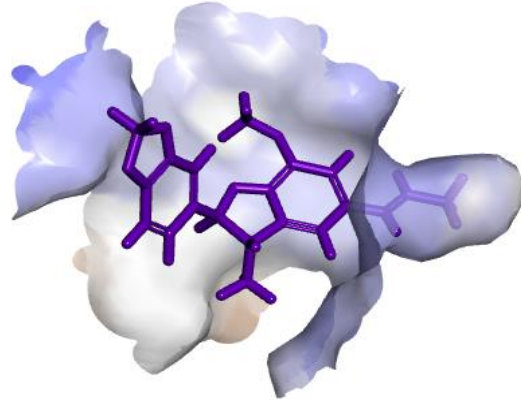
Methyl eugenol



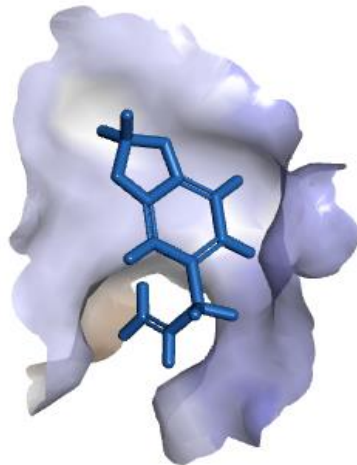
Lampiran 3. *Binding pocket* ligan uji terhadap reseptor mGluR1 (3KS9)



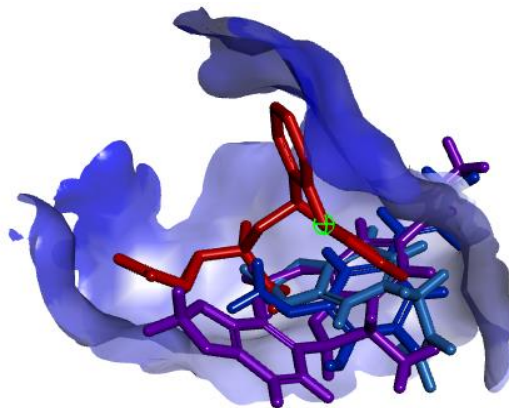
Isoeugenol



Licarin B

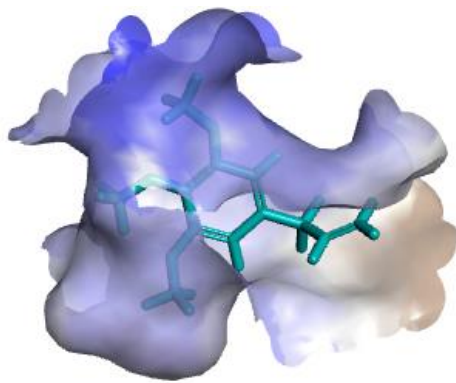


Safrole

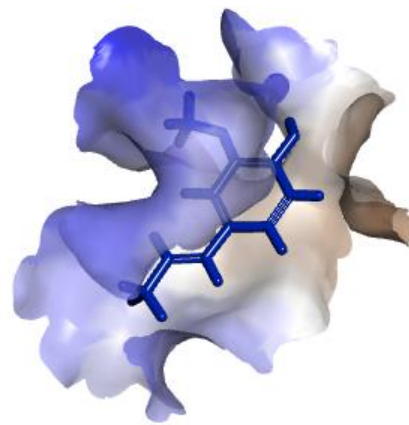


Warna merah
native ligand

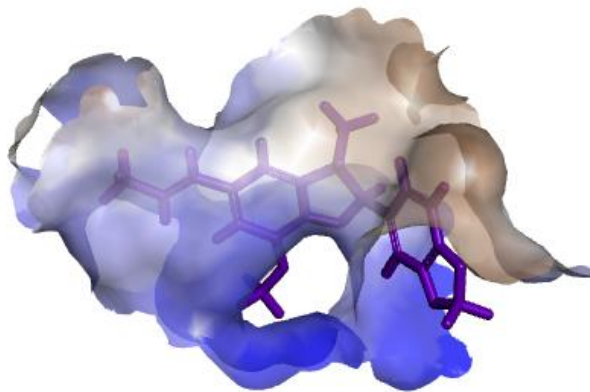
Lampiran 4. *Binding pocket* ligan uji terhadap reseptor NMDAR (STP9)



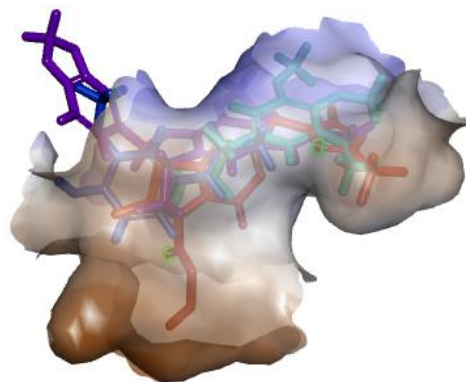
Elemicin



Isoeugenol



Licarin B



Warna merah
native ligand