

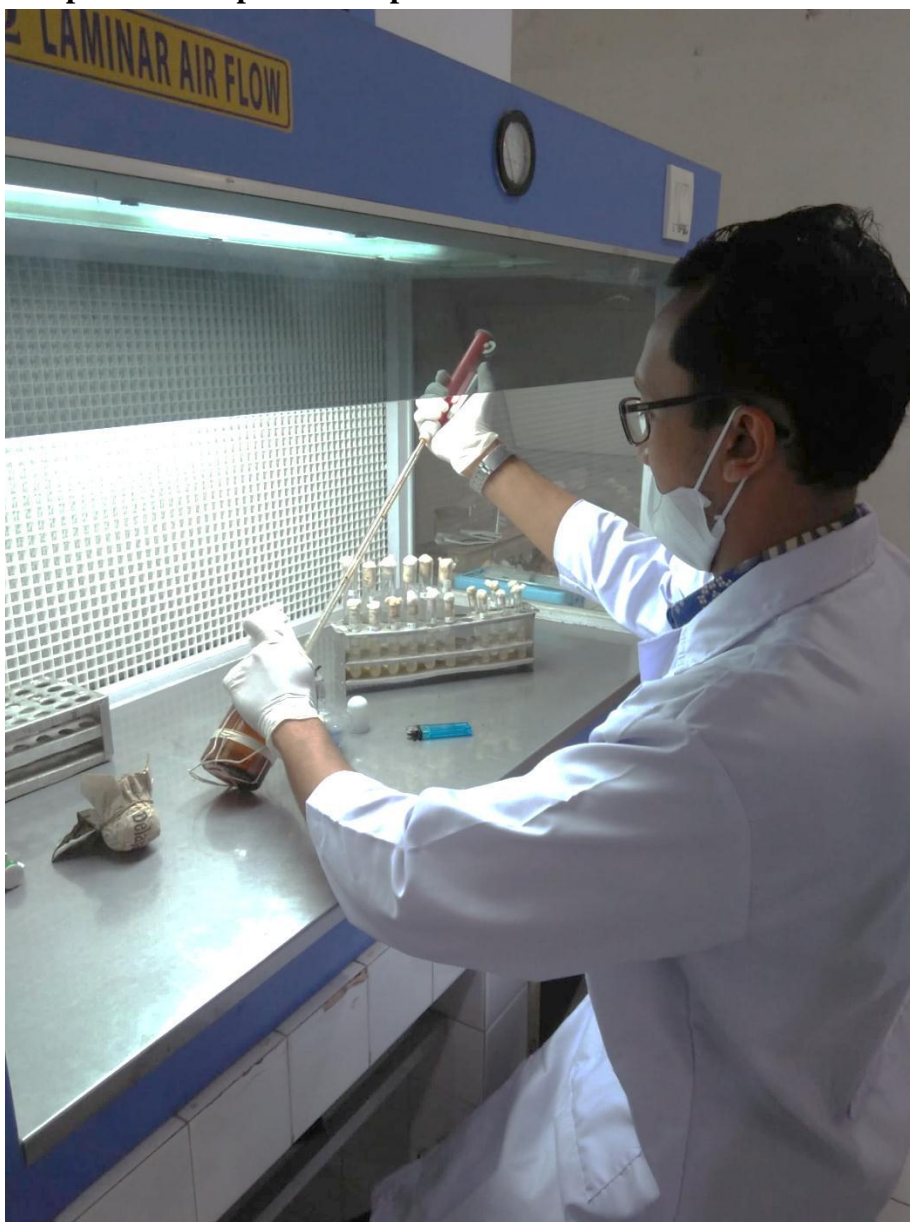
**Lampiran1. Daftar MPN per 100 ml sampel (3 tabung tiap seri pengenceran)**

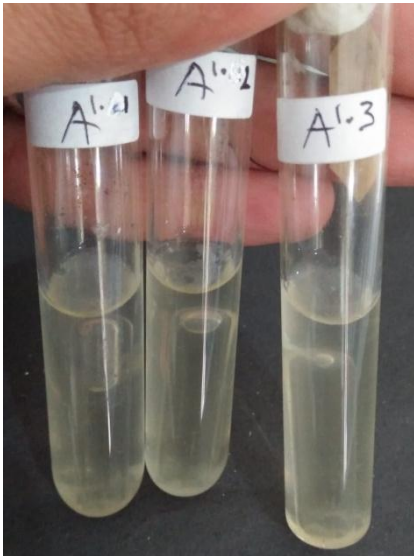
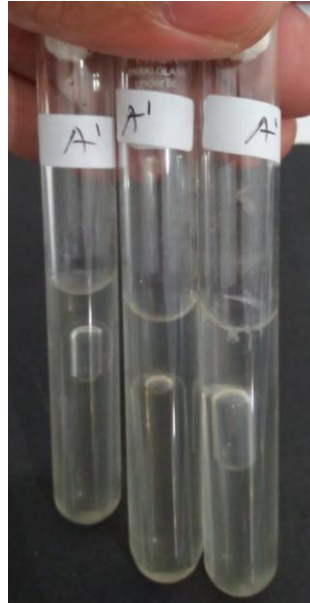
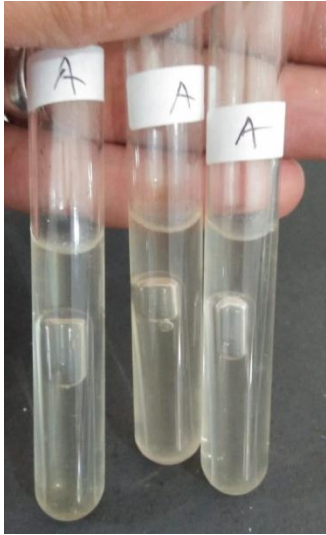
**TABEL MPN PER 100 ML SAMPEL (3 TABUNG TIAP SERI PENGECERAN)**

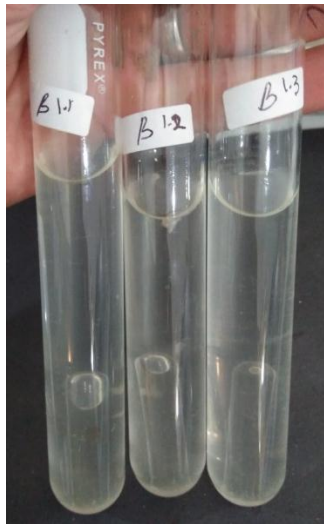
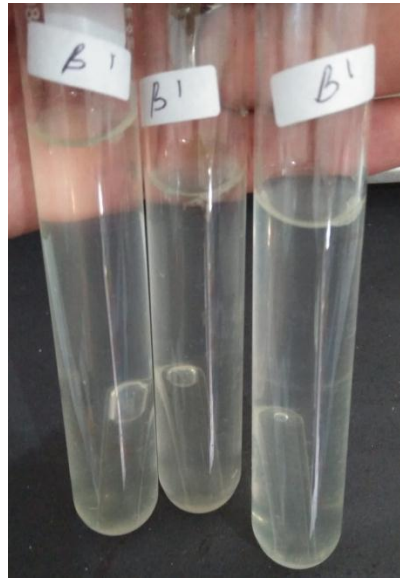
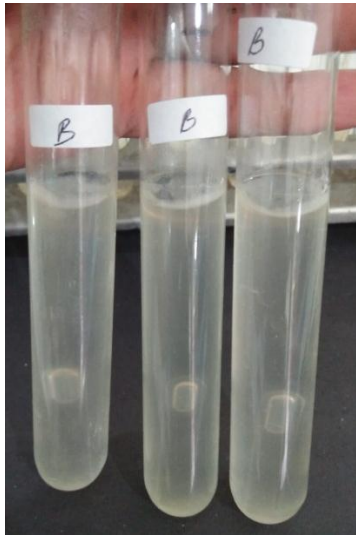
*pada medium BGLB.*

Jumlah tabung positif tiap pengenceran			MPN per 100 ml	Jumlah tabung positif tiap pengenceran			MPN per 100 ml
10 ml	1 ml	0.1 ml		10 ml	1 ml	0.1 ml	
0	0	0		2	0	0	9.1
0	1	0	3	2	0	1	14
0	0	2	6	2	0	2	20
0	0	3	9	2	0	3	26
0	1	0	3.1	2	1	0	15
0	1	1	6.1	2	1	1	20
0	1	2	9.3	2	1	2	27
0	1	3	12	2	1	3	34
0	2	0	6.2	2	2	0	21
0	2	1	9.3	2	2	1	28
0	2	2	12	2	2	2	35
0	2	3	16	2	2	3	42
0	3	0	9.4	2	3	0	29
0	3	1	13	2	3	1	36
0	3	2	16	2	3	2	44
0	3	3	19	2	3	3	53
1	0	0	3.6	3	0	0	23
1	0	1	7.2	3	0	1	39
1	0	2	11	3	0	2	64
1	0	3	15	3	0	3	95
1	1	0	7.3	3	1	0	43
1	1	1	11	3	1	1	75
1	1	2	15	3	1	2	120
1	1	3	19	3	1	3	160
1	2	0	11	3	2	0	93
1	2	1	15	3	2	1	150
1	2	2	20	3	2	2	210
1	2	3	24	3	2	3	290
1	3	0	16	3	3	0	240
1	3	1	20	3	3	1	460
1	3	2	24	3	3	2	1100
1	3	3	29	3	3	3	>2400

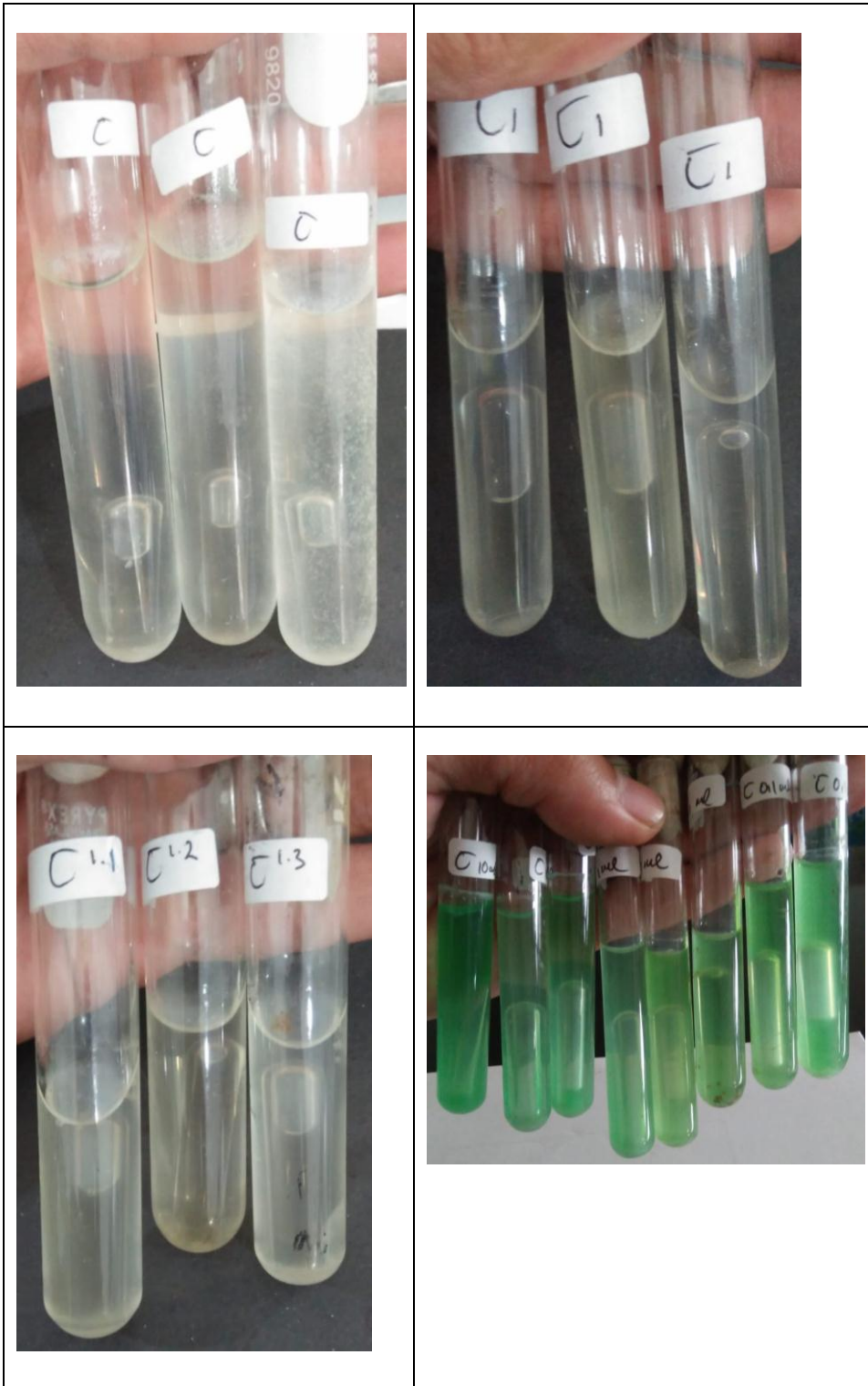
(Sumber : "Microbes in Action")

**Lampiran 2. Preparasi Sampel**

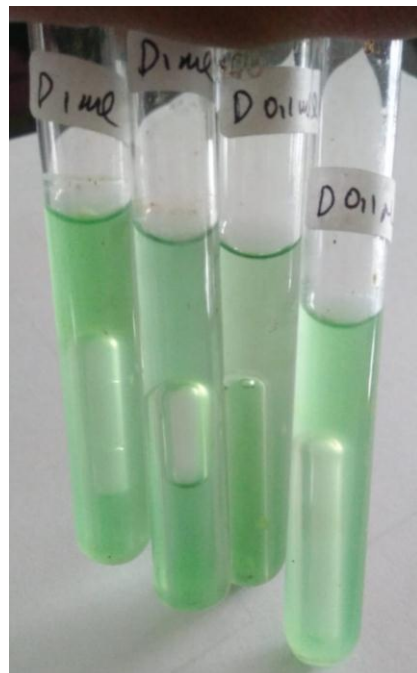
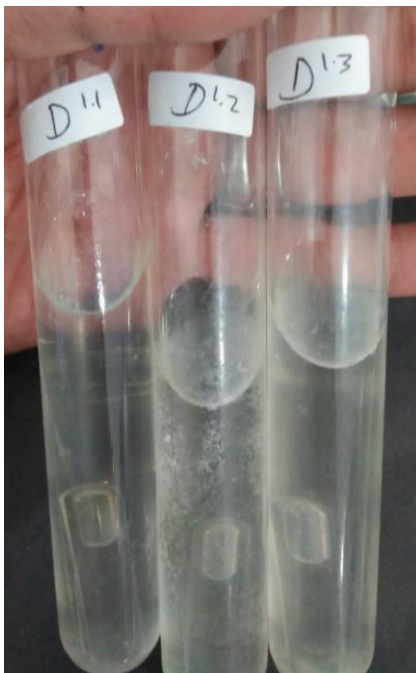
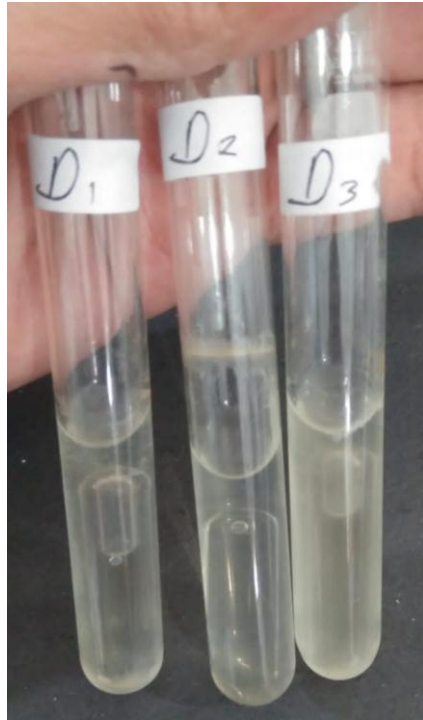
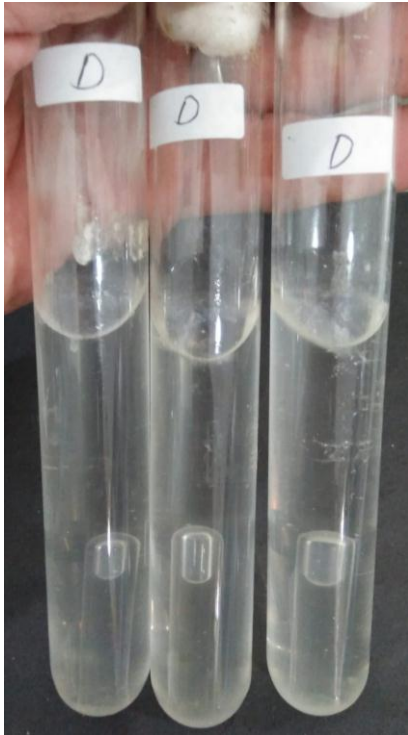
**Lampiran 3. LB dan BGLB smpel A**

**Lampiran 4. LB dan BGLB Sampel B**

Lampiran 5. LB dan BGLB C



**Lampiran 6. LB dan BGLB Sampel D**



**Lampiran 7. LB dan BGLB Sampel E**